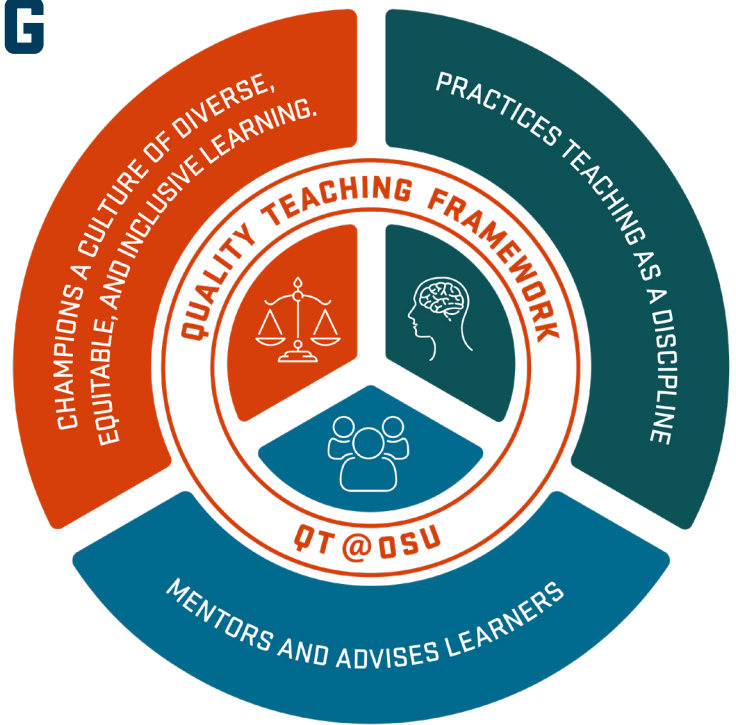


# QUALITY TEACHING FRAMEWORK

OSU faculty are committed to quality teaching and student success. An instructional faculty member engaged in quality teaching is one who:



## PRINCIPLE 1

Champions a culture of diverse, equitable, and inclusive learning.

- 1.1 Recognizes how their own identity influences the learning environment and intersects with broader cultural, social, and political contexts.
- 1.2 Mitigates barriers and provides pathways for learners to achieve full participation.
- 1.3 Builds a sense of belonging and enables collaboration across difference.
- 1.4 Ensures each learner has the resources and experiences needed to achieve shared goals.

## PRINCIPLE 2

Practices teaching as a discipline.

- 2.1 Demonstrates intentional and effective course design.
- 2.2 Demonstrates evidence-based and disciplinary facilitation.
- 2.3 Demonstrates intentional and effective assessment.
- 2.4 Learns from and contributes to the professional development of teaching.
- 2.5 Maintains currency in disciplinary practices and content.

## PRINCIPLE 3

Mentors and advises learners.

- 3.1 Supports learners in their personal growth.
- 3.2 Supports learners in their professional growth.
- 3.3 Supports learners in their academic growth.

Developed by the OSU Advancement of Teaching Committee, adopted by the OSU Faculty Senate, 2021



**Oregon State  
University**